



## University of Plymouth circa 600 bedrooms and kitchens installed

**Cowlin**

**Project:** UNIVERSITY OF PLYMOUTH  
Francis Drake Hall and Mary Newman Hall  
(New Build and Refurbishment)

**Contractor:** COWLIN CONSTRUCTION LTD

**Architect:** WILLMORE ILES ARCHITECTS, BRISTOL

**Timescale - Start:** March 2007

**Finish:** August 2007

**Location:** PLYMOUTH, UK

The University has around 30000 students and has recently invested nearly £110m in state-of-the-art facilities

**Size:** c.600 bedrooms and kitchens consisting of:  
27 bedroom types  
13 kitchen types



### What did we do?

Rosehill were proud to offer a TURN-KEY approach and successfully designed, manufactured and installed:

- Fully fitted bedrooms and kitchens
- Modular seating, lounge chairs and coffee tables
- Kitchen tables and chairs

We also supplied:

- A range of white goods including double ovens, extractor hoods, fridges/freezers, kettles, irons, microwaves, vacuums etc
- Health and Safety equipment including fire extinguishers and fire blankets
- Operator's chairs
- Loose equipment, such as triple sack-holders and ironing boards and much, much more...



### What the client had to say...

*"Rosehill addressed the design detail and fabrication drawings diligently and progressed the works on site efficiently and in accordance with the project programme demands"*

Senior Project Manager

For your Client's approval Rosehill will design, manufacture and install a fully fitted sample bedroom or kitchen



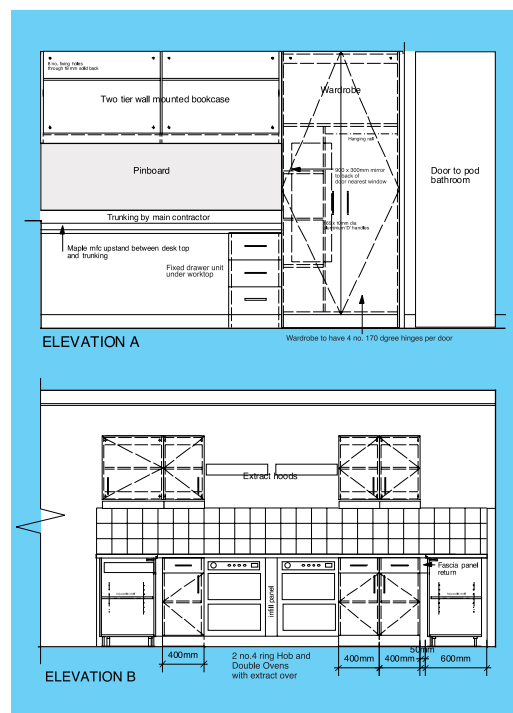
# Rosehill

## PROJECT MANAGEMENT LTD:

- From design to installation
- ISO 9001 factory
- Furniture to BS4875
- CSCS registered installation teams
- Detailed working drawings for pre-manufacture approval
- Experience in projects from 20 to 5000 bedroom schemes
- UK wide blue chip references - available on request

## OUR STANDARD FURNITURE SPECIFICATION:

- Standard Rosehill case furniture is manufactured from 18mm (750 density) MFC. We also supply solid wood and MDF
- All exposed edges are lipped with a matching 2mm Impact Resistant PVC
- Zinc alloy bedroom D-handles
- Pin boards 9mm thick, FR hessian covered, brass fixings and grommets BS 476
- Mattresses comply with BS7177, Crib 5 resistance
- Chair upholstery adheres to BS7176, ignition source 5 – BS5852 inc stain repellence, guaranteed to 150,000 rubs; complies to BS5459-2:2000
- Drawers utilise a metal box system (metal sides and runners, self closing with heavy duty rollers)
- 3-Way fully adjustable all metal hinges 90 degrees or 170 degree option
- Kitchen worktops come with high pressure laminate guaranteed to BS/EN 438. The glueline is guaranteed moisture & heat resistant to BS/EN 204; mitred joints
- Stainless Steel T-Bar Kitchen handles
- Rosehill bedroom and kitchen furniture complies to BS 6222x3:1999 & BS/EN 13986
- All Rosehill timber is from an FSC approved renewable source



## What the client had to say...

*“Rosehill clearly illustrated a pride in their works and progressed methodically in co-ordination with other site trades. Any minor snag issues, identified as operations progressed, were addressed promptly and the final quality of work achieved was of a high standard”*

Senior Project Manager

**Rosehill**  
FURNITURE GROUP  
QUALITY FURNITURE SINCE 1982

Contact us for further information

Tel: 0161 485 1717 Fax: 0161 485 2727

email: [project@rosehill.co.uk](mailto:project@rosehill.co.uk) or visit [www.rosehill.co.uk](http://www.rosehill.co.uk)

**FROM DESIGN TO INSTALLATION**