



University of Kent Over 800 bedrooms and kitchens installed



Project: UNIVERSITY OF KENT - 2 Phases
Contractor: COSTAIN LTD
Architect: CORNISH ARCHITECTS, LONDON
Timescale: **Start:** 2004 **Finish:** 2005
Location: CANTERBURY, UK

Kent is in the UK's top ten universities for student satisfaction of course quality. A friendly and vibrant campus with an excellent social life and superb facilities is built on 300 acres of parkland. Within a walking distance of the Canterbury city centre, it offers green and tranquil open spaces. The campus is self-contained and includes student accommodation, a library, sports centre, theatre, nightclub, eating places, shops, medical centre and a day nursery.

Size: Over 800 bedrooms and kitchens consisting of: 720 bedrooms and 130 kitchens. Additional staff/closets restrooms.



What did we do?

Rosehill were proud to offer a TURN-KEY approach and successfully designed, manufactured and installed:

- Fully fitted bedrooms and kitchens
- Modular seating, lounge chairs and coffee tables
- Kitchen tables and chairs
- Bespoke recycle units

We also supplied:

- A range of white goods including ovens, extractor hoods, fridges/freezers, kettles, irons, microwaves, vacuums etc
 - Health and Safety equipment including fire extinguishers and fire blankets
 - Operator's chairs
 - Curtains and blinds
- and much, much more...



What the client had to say...

"Rosehill undertook the project in a professional manner and completed their work on programme. Rosehill remained co-operative and flexible in their approach to the project and we would not hesitate in employing them again."

Project Manager

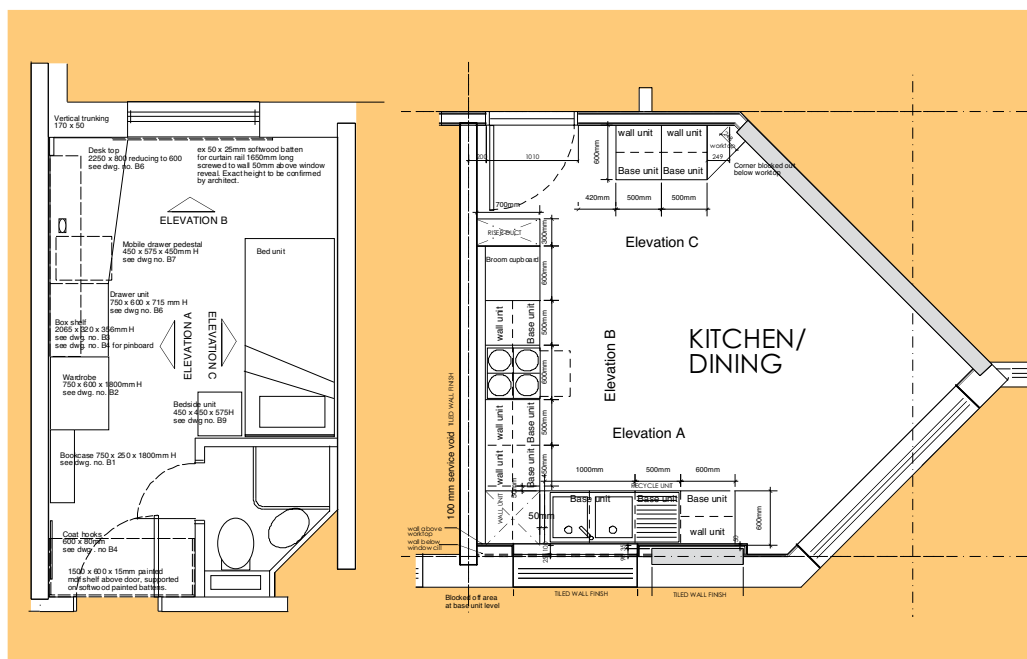
For your Client's approval Rosehill will design, manufacture and install a fully fitted sample bedroom or kitchen



Rosehill

PROJECT MANAGEMENT LTD:

- From design to installation
- ISO 9001 factory
- Furniture to BS4875
- CSCS registered installation teams
- Detailed working drawings for pre-manufacture approval
- Experience in projects from 20 to 5000 bedroom schemes
- UK wide blue chip references - available on request



What the client had to say...

"The cost effective range of furniture has provided adequate service for the students throughout the academic year. We would recommend Rosehill furniture to any end user who is looking for a reliable solution to their furniture needs."

The University

OUR STANDARD FURNITURE SPECIFICATION:

- Standard Rosehill case furniture is manufactured from 18mm (750 density) MFC. We also supply solid wood and MDF
- All exposed edges are lipped with a matching 2mm Impact Resistant PVC
- Zinc alloy bedroom D-handles
- Pin boards 9mm thick, FR hessian covered, brass fixings and grommets BS 476
- Mattresses comply with BS7177, Crib 5 resistance
- Chair upholstery adheres to BS7176, ignition source 5 – BS5852 inc stain repellence, guaranteed to 150,000 rubs; complies to BS5459-2:2000
- Drawers utilise a metal box system (metal sides and runners, self closing with heavy duty rollers)
- 3-Way fully adjustable all metal hinges 90 degrees or 170 degree option
- Kitchen worktops come with high pressure laminate guaranteed to BS/EN 438. The glue line is guaranteed moisture & heat resistant to BS/EN 204; mitred joints
- Stainless Steel T-Bar Kitchen handles
- Rosehill bedroom and kitchen furniture complies to BS 6222x3:1999 & BS/EN 13986
- All Rosehill timber is from an FSC approved renewable source

Rosehill
FURNITURE GROUP
QUALITY FURNITURE SINCE 1982

Contact us for further information

Tel: 0161 485 1717 Fax: 0161 485 2727

email: project@rosehill.co.uk or visit www.rosehill.co.uk

FROM DESIGN TO INSTALLATION